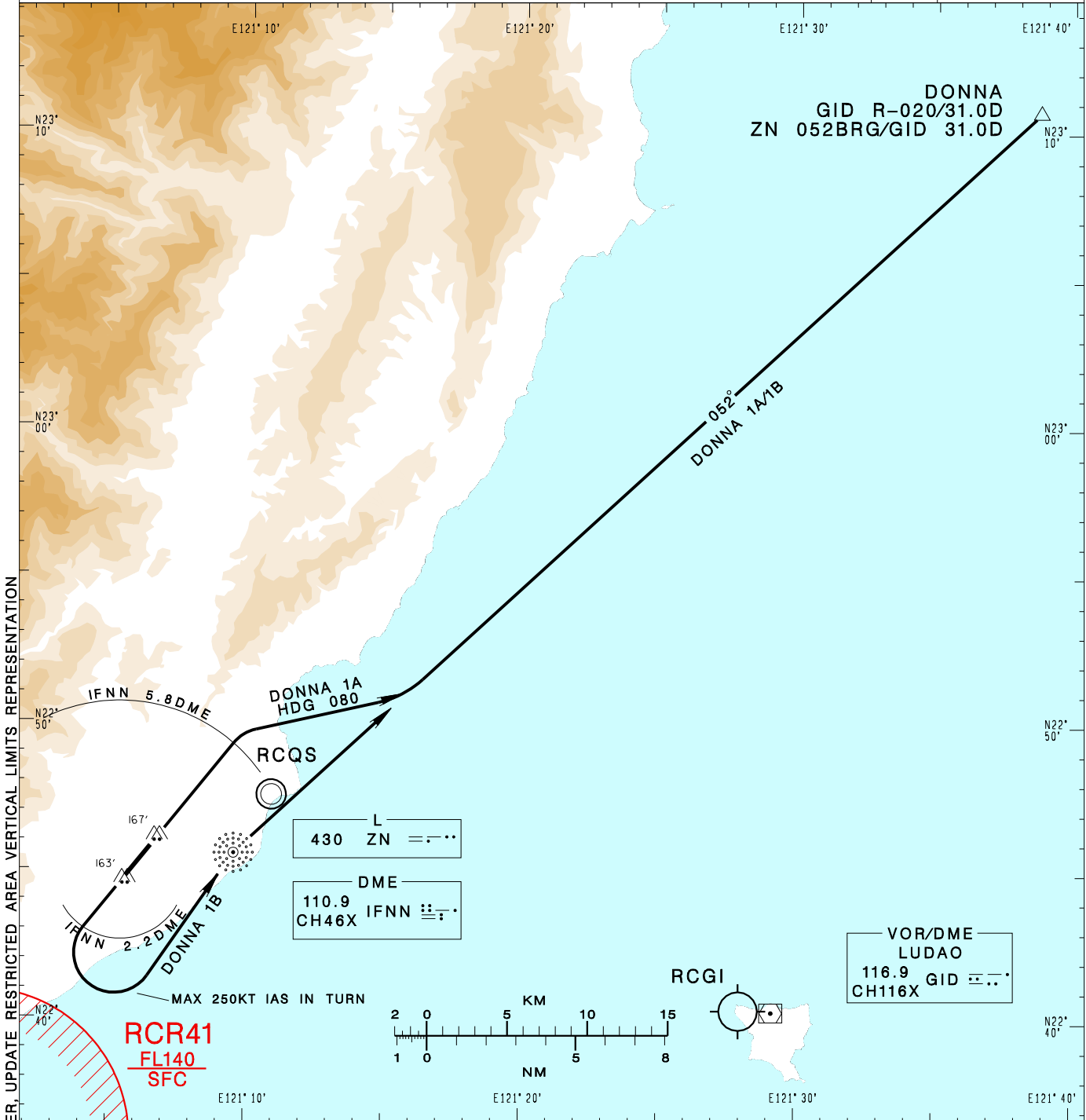


臺東/豐年機場
TAITUNG/FONGNIAN AD

RCFN SID
DONNA 1A(RWY04)
DONNA 1B(RWY22)

KAOSIUNG APP 119.4 228.2	FONGNIAN TWR 118.1 236.6	ATIS 127.0	VAR 4° W	
Apt Elev: 143'		Trans Level: FL130		
BEARINGS ARE MAGNETIC; DISTANCES ARE NAUTICAL MILES; ELEVATIONS, HEIGHTS IN FEET				



CHANGES: NEW PAGE NUMBER, UPDATE RESTRICTED AREA VERTICAL LIMITS REPRESENTATION

DONNA ONE ALFA DEPARTURE
Depart RWY HDG until IFNN 5.8D, then turn right HDG 080 to track ZN 052BRG to DONNA to join B591.

DONNA ONE BRAVO DEPARTURE
Depart RWY HDG until IFNN 2.2D, then turn left direct to ZN, then track ZN 052BRG to DONNA to join B591.

NOTE

- DONNA 1A: Requires a minimum climb gradient of 6.6%(400ft/NM) until established on ZN 052BRG.
- DONNA 1B: Requires a minimum climb gradient of 6.3%(383ft/NM) until ZN.
- Caution close-in obstacles (trees & poles): 167ft MSL, 96m northeast of RWY22 THR & 163ft MSL, 69m south of RWY04 THR.
- High terrain around the airport.